

# CUB SCOUT MEETING GUIDE

# DINOSAURS



# INTRODUCTION

## DINOSAURS

This week you will become a paleontologist and geologist and travel back to prehistoric lands in the time of the dinosaurs. Use this book to help you on your adventures as you embark on this prehistoric journey. Your adventure starts now!

## IN THIS GUIDE

- Lion: Lion's Honor
- Tiger: My Tiger Jungle
- Wolf: Digging in the Past
- Bear: Fur, Feathers, and Ferns
- Webelos: Earth Rocks
- My Dinosaur Activity Sheet
- 1 Foot Hike
- Edible Earth Layers
- Dinosaur Fact Cards

## HOW TO USE THIS GUIDE

Find your Den's Adventure and complete the activities, some activities can be completed at home and others will be completed in our meeting, this is indicated with a yellow or blue star.

 **COMPLETE AT HOME**

 **COMPLETE IN MEETING**

# LIONS



## PICK MY PATH

- ★ 1.Explain that choices have consequences.
- ★ 2.Perform a good turn for another person.\*
- ★ 3.Teach a game to another person. This requirement may be accomplished at home or at the outing.

\*Perform a good turn before the upcoming meeting and share what you did during the meeting.

# TIGERS



## MY TIGER JUNGLE

Complete Requirements 1 plus at least two others.

- ★ 1. With your parent/guardian or other caring adult (referred to in the handbook as "your adult partner"), go for a walk outside, and pick out two or more sights or sounds of "nature" around you. Discuss with your partner or den.
- ★ 2. Take a 1-foot hike. Make a list of the living things you find on your 1-foot hike. Discuss these plants or animals with your parent/guardian, other caring adult, or your den.
- ★ 3. Point out two different kinds of birds that live in your area. With your parent/guardian, other caring adult, or den, find out more about one of these birds.
- ★ 4. Be helpful to nature by planting a plant, shrub, or tree. Learn more about the needs and growth of the item you've planted.
- ★ 5. Build and hang a birdhouse.

# WOLFS



## DIGGING IN THE PAST

Complete the following Requirements.

- ★ 1. Play a game that demonstrates your knowledge of dinosaurs, such as a dinosaur match game.
- ★ 2. Create an imaginary dinosaur. Share with your den its name, what it eats, and where it lives.\*
- ★ 3. Complete one of the following:
  - (a) Make a fossil cast.
  - (b) Make a dinosaur dig. Be a paleontologist, and dig through a dinosaur dig made by another member of your den. Show and explain the ways a paleontologist works carefully during a dig.
- ★ 4. Make edible fossil layers. Explain how this snack is a good model for the formation of fossils.

\*Create your dinosaur before the upcoming meeting and share it during the meeting.

# BEARS

## **FUR, FEATHERS, AND FERNS**

Complete Requirement 1 and three others.

- ★ 1. While hiking or walking for one mile, identify six signs that any mammals, birds, insects, reptiles, or plants are living near the place where you choose to hike or walk.
- ★ 2. Visit one of the following: zoo, wildlife refuge, nature center, aviary, game preserve, local conservation area, wildlife rescue group, or fish hatchery. Describe what you learned during your visit.
- ★ 3. Name one animal that has become extinct in the last 100 years and one animal that is currently endangered. Explain what caused their declines.
- ★ 4. Observe wildlife from a distance. Describe what you saw.
- ★ 5. Use a magnifying glass to examine plants more closely. Describe what you saw through the magnifying glass that you could not see without it.
- ★ 6. Learn about composting and how vegetable waste can be turned into fertilizer for plants.
- ★ 7. Plant a vegetable or herb garden.

# WEBELOS

## EARTH ROCKS

Complete all Requirements.



1. Do the following:

(a) Explain the meaning of the word "geology."

(b) Explain why this kind of science is an important part of your world.



2. Look for different kinds of rocks or minerals while on a rock hunt with your family or your den.



3. Do the following:

(a) Identify the rocks you see on your rock hunt. Use the information in your handbook to determine which types of rocks you have collected.

(b) With a magnifying glass, take a closer look at your collection. Determine any differences between your specimens.



(c) Share what you see with your family or den.

4. Do the following:

(a) With your family or den, make a mineral test kit, and test minerals according to the Mohs scale of mineral hardness.



(b) Record the results in your handbook.

5. Identify on a map of your state some geological features in your area.

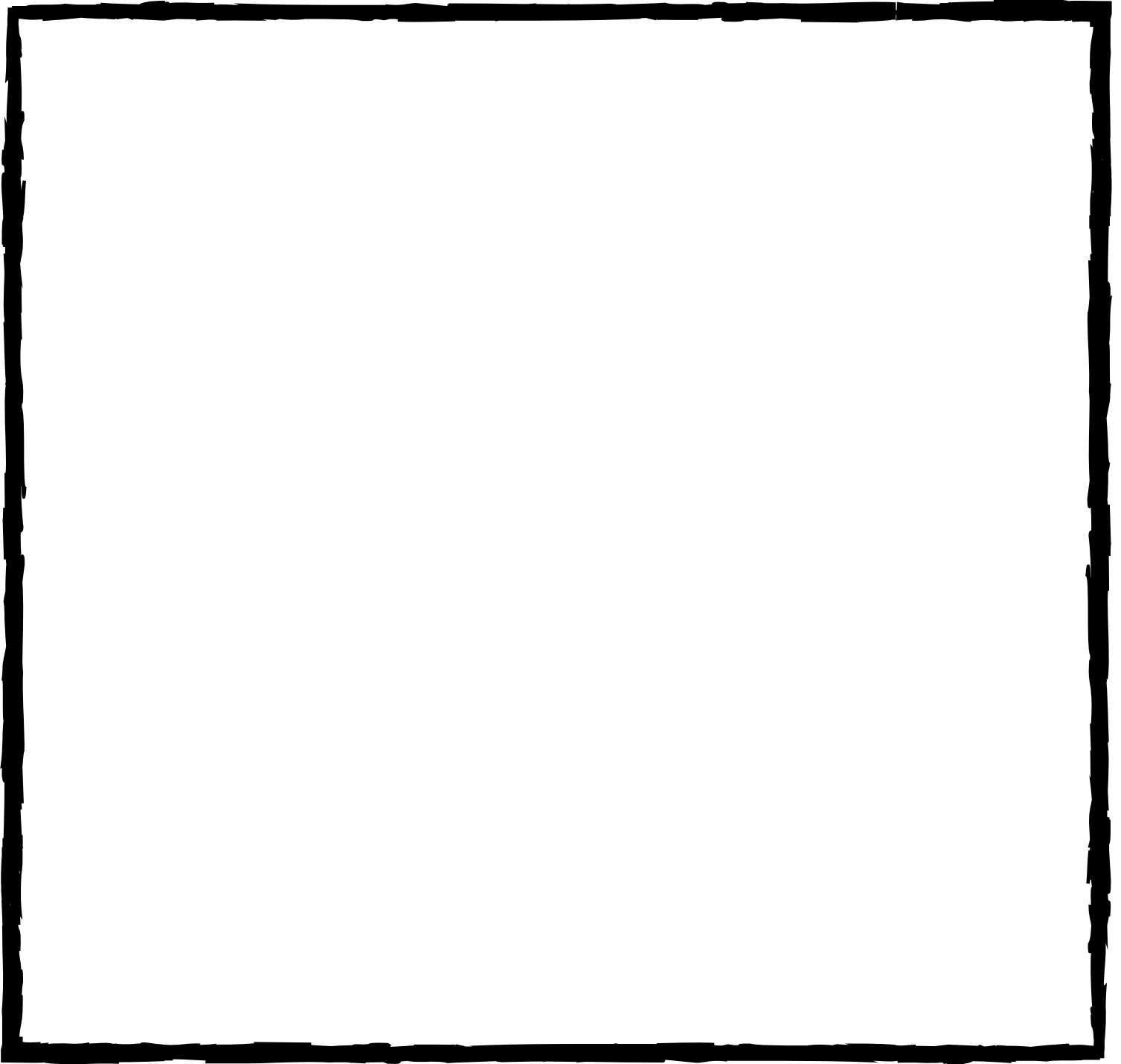


6. Do the following:

(a) Identify some of the geological building materials used in building your home.

(b) Identify some of the geological materials used around your community.

# My Dinosaur



MY dinosaur's name is... \_\_\_\_\_

MY dinosaur eats... \_\_\_\_\_

MY dinosaur lives... \_\_\_\_\_



# EDIBLE FOSSIL LAYERS SNACK

## POSSIBLE INGREDIENTS (PICK 3 OR 4)

- Jell-O
- Crushed Graham Crackers
- Pudding
- Animal Crackers
- Fruit
- Whipped Cream
- Shredded Coconut
- M&Ms
- Yogurt
- Granola



## INSTRUCTIONS

Pick three or four ingredients for your edible fossil layers. In a plastic cup or bowl add your first layer. Carefully add each of the remaining layers, one layer at a time. Enjoy.

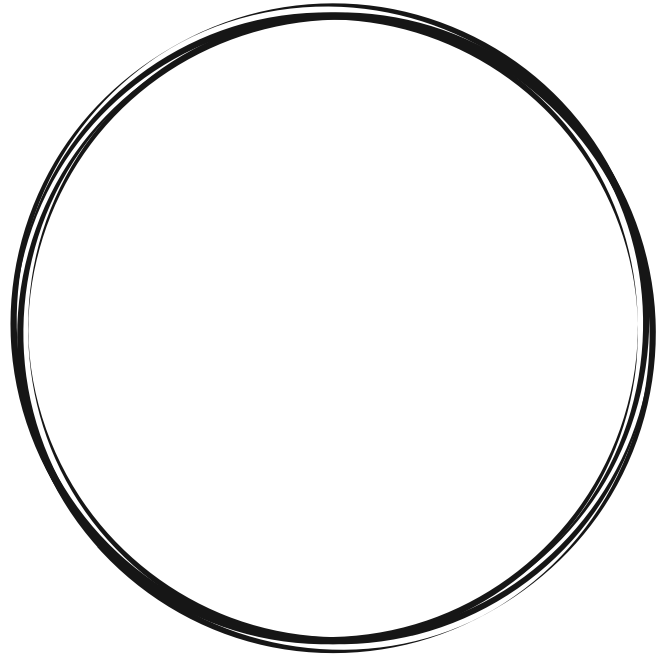
## FOSSIL LAYERS

A common way fossils are formed is when a plant or animal dies and is buried in mud and silt. Over time the body decomposes and sediment builds over the top. Layers of sediment continue to build up and harden into rock.

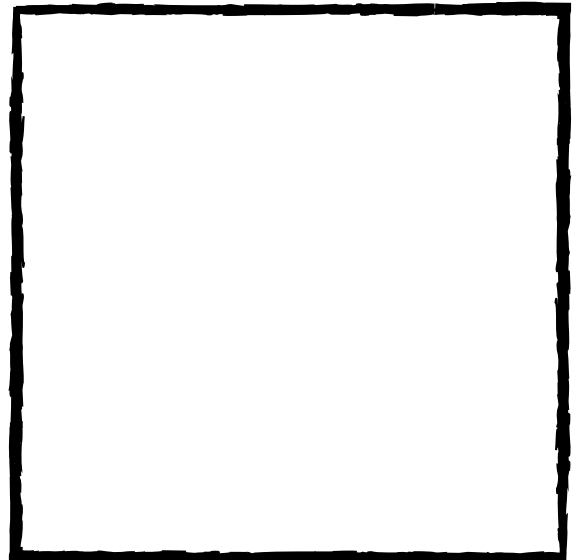
# 1 FOOT HIKE



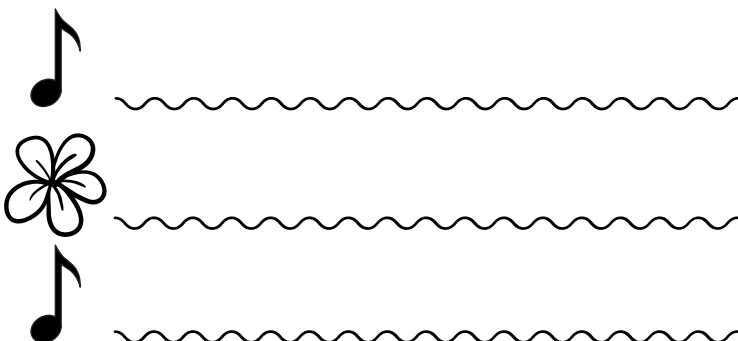
What I saw In My Glass



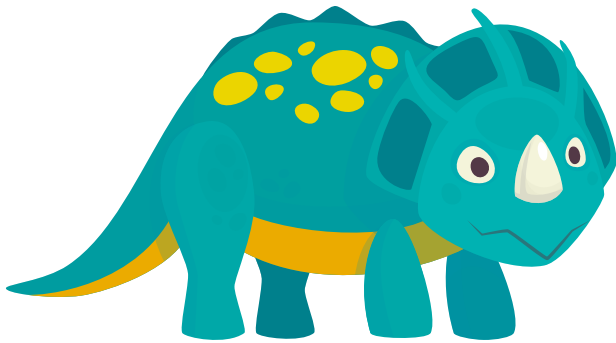
What I saw In My Square



Things I heard and Smelled



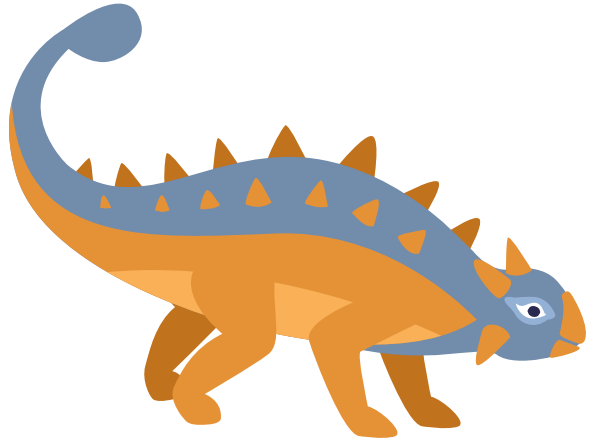
## TRICERATOPS



### TRICERATOPS FACTS

Late Cretaceous Period  
Herbivore  
25 Feet Long

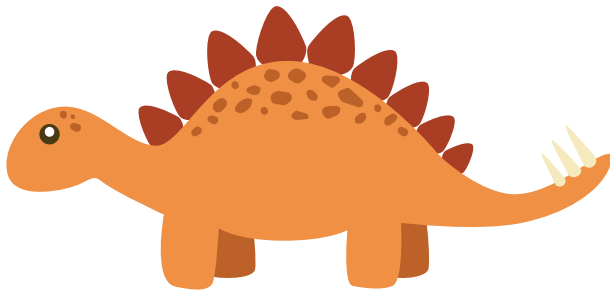
## ANKYLOSAURUS



### ANKYLOSAURUS FACTS

Late Cretaceous Period  
Herbivore  
30 Feet Long

## STEGOSAURUS



### STEGOSAURUS FACTS

Late Jurassic Period  
Herbivore  
30 Feet Long

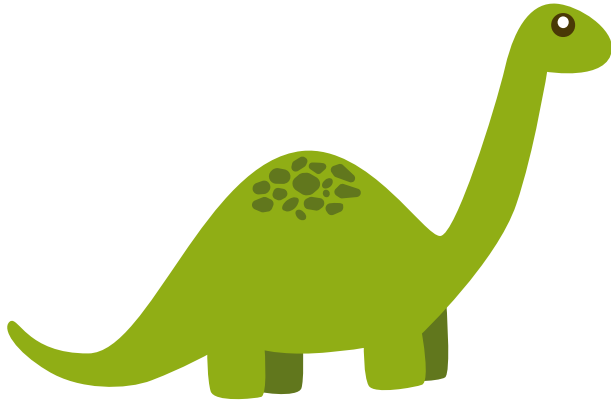
## PTERODACTYL



### PTERODACTYL FACTS

Late Jurassic Period  
Carnivore  
3.5 Feet Long

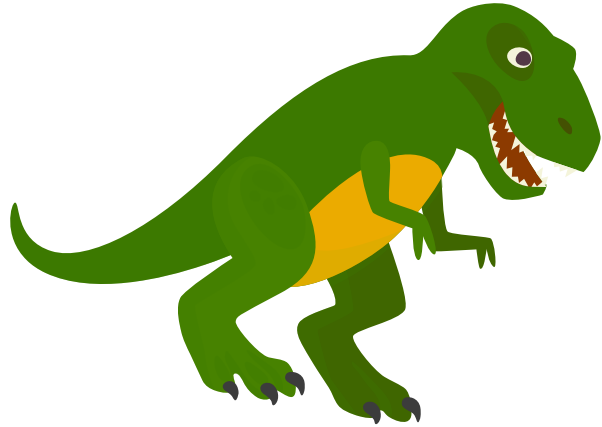
## BRONTOSAURUS



### BRONTOSAURUS FACTS

Jurassic Period  
Herbivore  
72 Feet Long

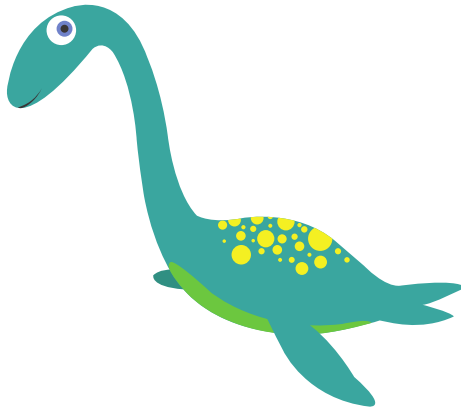
## T-REX



### TYRANNOSAURUS REX FACTS

Late Cretaceous Period  
Carnivore  
40 Feet Long

## PLESIOSAUR



### PLESIOSAUR FACTS

Early/Mid Jurassic Period  
Carnivore  
11 Feet Long

## VELOCIRAPTOR



### VELOCIRAPTOR FACTS

Late Cretaceous Period  
Carnivore  
6 Feet Long



BOY SCOUTS  
OF AMERICA®  
CASCADE PACIFIC COUNCIL