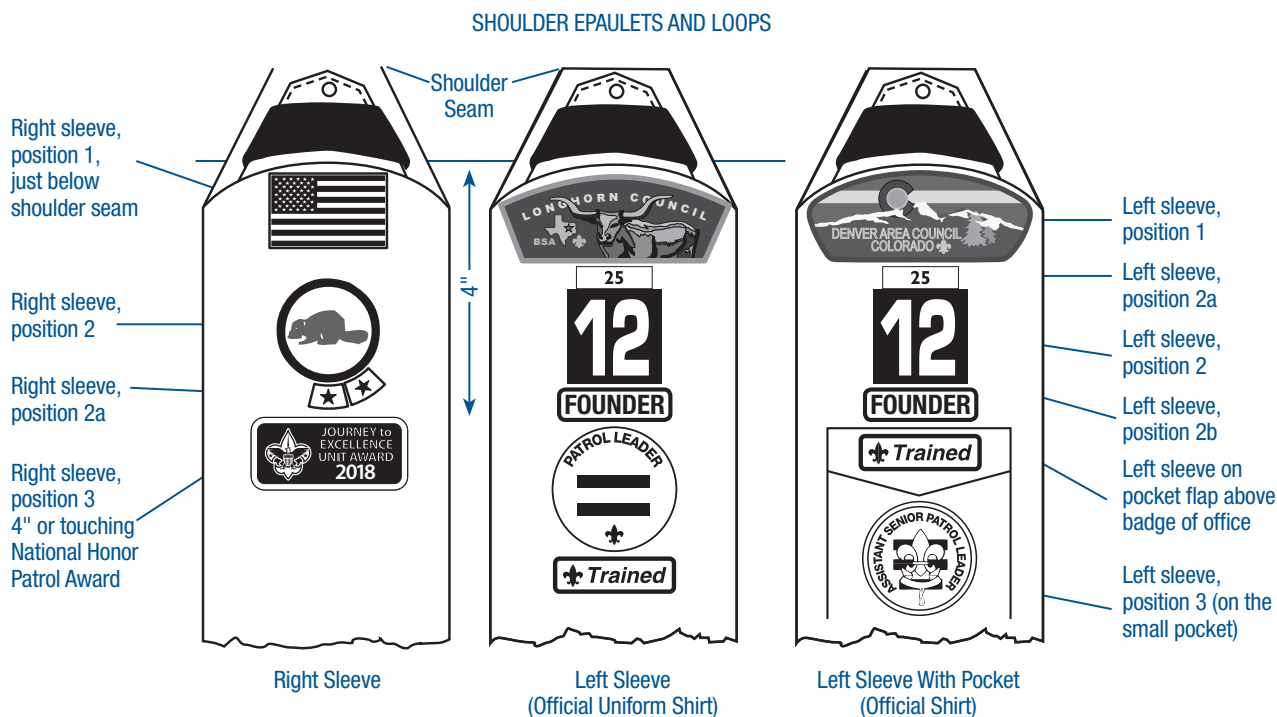


SCOUTS BSA INSIGNIA



Scouts BSA Program Identification

U.S. flag emblem, cloth, red, white, and blue, No. 103; Scout and Scout leader, right sleeve, position 1, just below shoulder seam. New uniforms have this emblem already sewn in the correct position. Only the BSA-issued flag may be worn. The flag orientation of the BSA uniform flag meets U.S. flag code.

Council shoulder emblem, cloth; Scout and Scout leader, left sleeve, position 1, just below shoulder seam.

Unit number, cloth, green on tan, Nos. 18070 through 18078 (last digit indicates the unit number for 0 through 8); for unit number 9, order No. 10406. Scout and Scout leader, left sleeve, position 2, touching council shoulder emblem if veteran unit bar is not worn. Multiple-digit numbers may be special-ordered—2-digit, No. 10409; 3-digit, No. 10410; 4-digit, No. 10411.

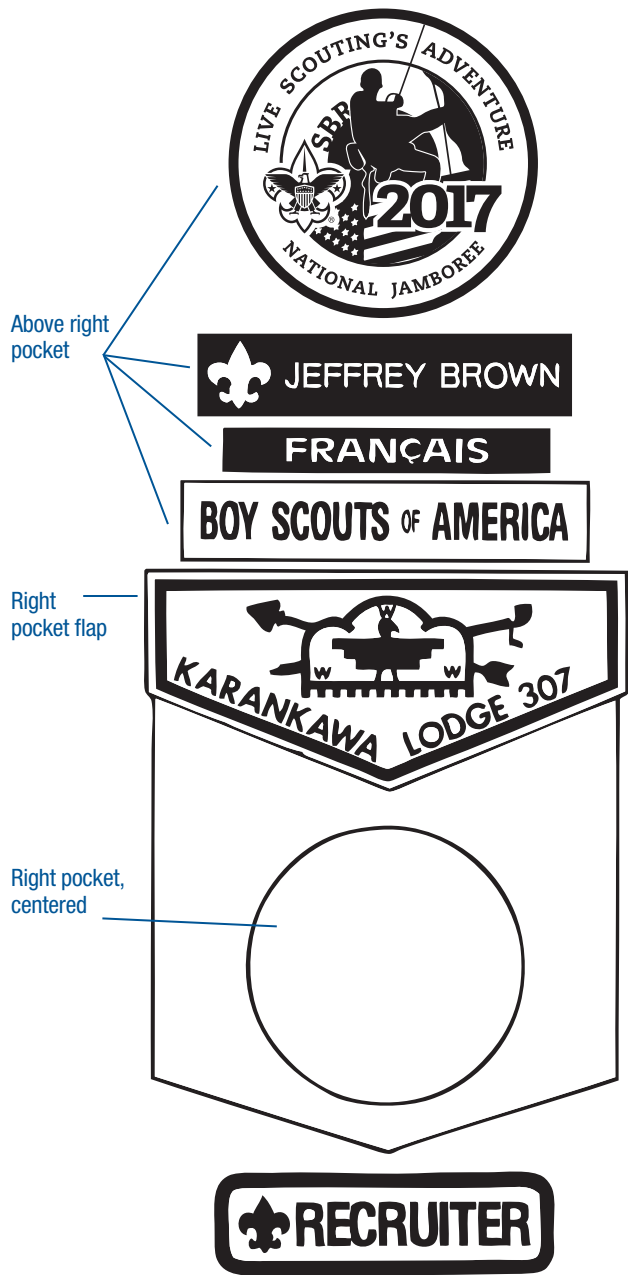
Lone Scout emblem, cloth, red and black on tan, No. 621122; Lone Scout, left sleeve, position 2 (in place of unit number).

Founder's bar, cloth, worn directly under unit number, left sleeve, position 2b, No. 610129.

Veteran unit bars, cloth, Scout and Scout leader, left sleeve, position 2a; 25 years, No. 133; 30 years, No. 50006; 35 years, No. 50007; 40 years, No. 50008; 45 years, No. 50009; 50 years, No. 105; 55 years, No. 194; 60 years, No. 195; 65 years, No. 196; 70 years, No. 197; 75 years, No. 107; 80 years, No. 198; 85 years, No. 138; 90 years, No. 50010; 95 years, No. 50011; 100 years, No. 50012, 105 years, No. 631067.

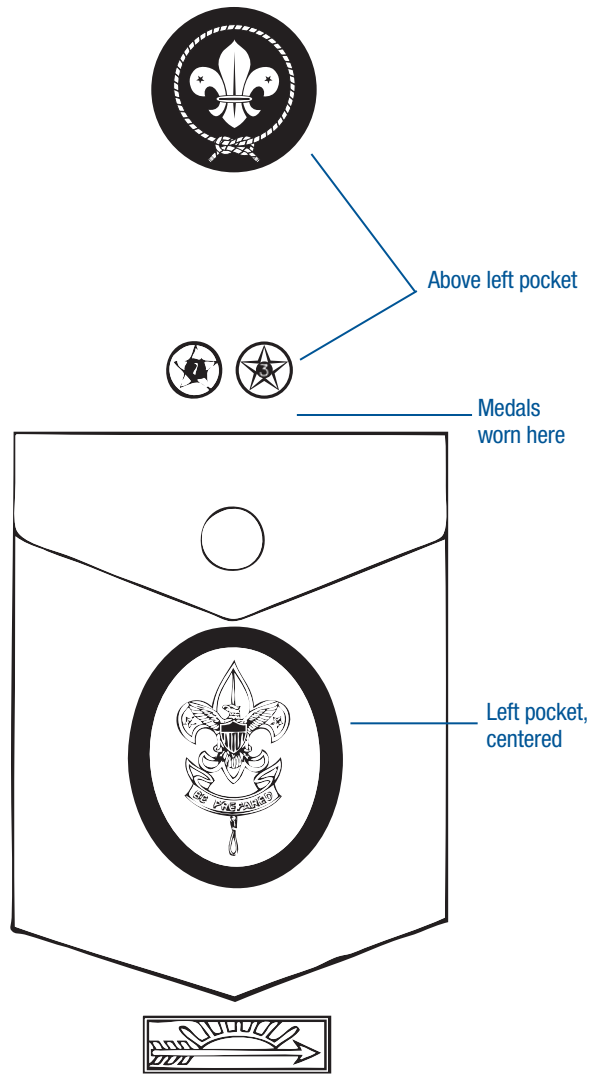
Unit number with veteran bar, cloth, unit number with veteran bar embroidered above the numerals. Special-ordered 2-digit unit number, No. 10412; 3-digit, No. 10413; 4-digit, No. 10414.

National Honor Patrol Award, cloth, No. 367; Scout; beneath patrol emblem of qualifying patrol, right sleeve, position 2a. Circles patrol emblem if earned more than once.



Right Pocket

Not more than five medals may be worn at a time, pinned in a single row immediately above the seam of the left pocket.



Left Pocket